



ARCHITECTURE  
**A + D**  
DESIGN

A JOURNAL OF INDIAN ARCHITECTURE VOL XIX NO 2 MARCH-APRIL 2002

**Bridging The Times**  
**Architecture Designed To Sell**  
**Signature Architecture**

+ SHOPPING MALLS



**Above** Night view of Galleria1

**Left** A view of the central portion of Galleria

# Galleria

Hiranandani Gardens, Mumbai

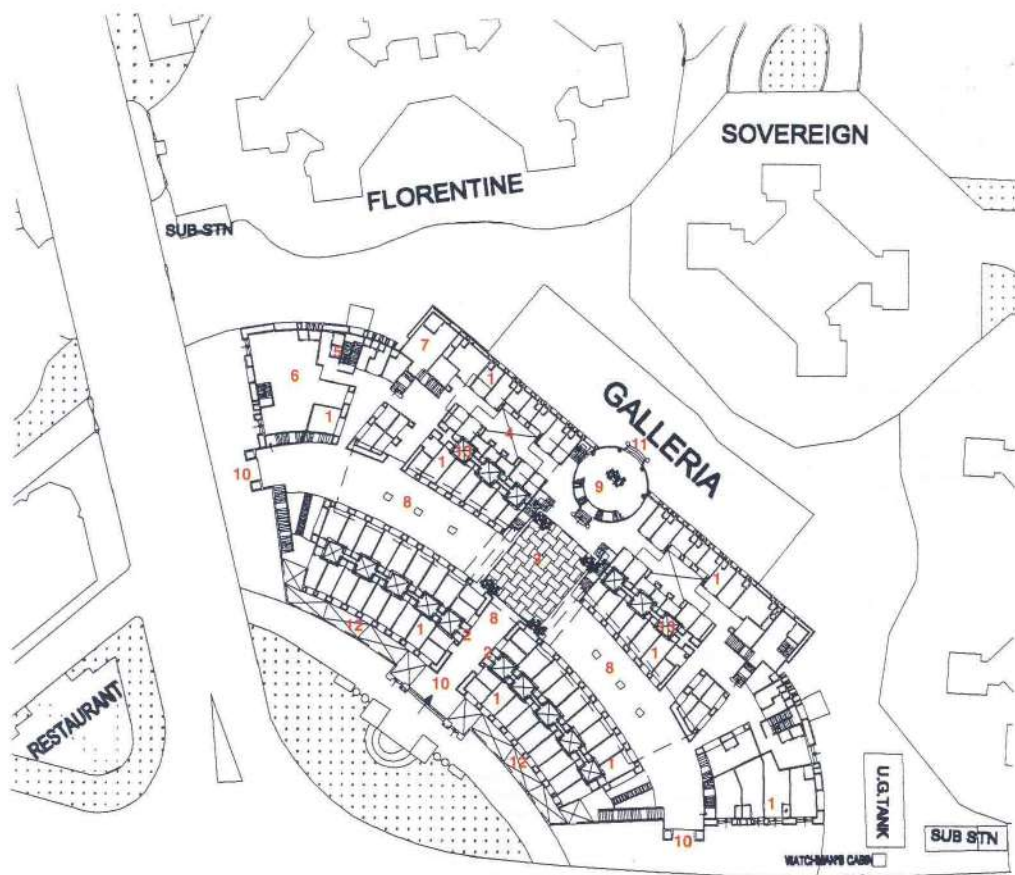
Architects **Hafeez Contractor** Mumbai



The success of residential buildings at Hiranandani Gardens, Powai, Mumbai, created a necessity of a shopping mall like the Galleria. This shopping mall is an example of a Western concept being adapted to Indian conditions. Galleria enjoys a prime location within the complex and is contained within a low-rise form that is symmetrical along its shorter axis. This built form follows the architectural language and stylistics of the rest of the complex and is lavish with conventionalized classical orders and a blue-tiled roof.

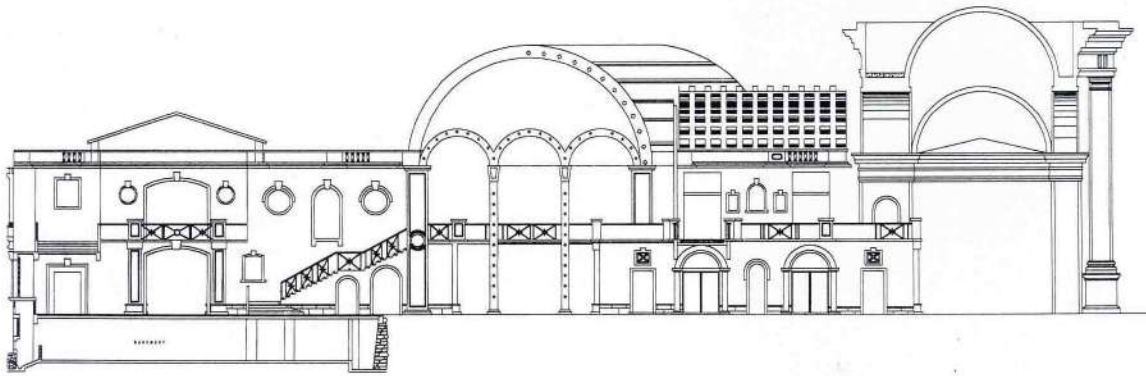
The internal planning of Galleria is dictated by the practical requirements. The building accommodates shopping units of various sizes. A combination of several smaller units creates a larger shop, thereby facilitating variation.

The typical floor plan consists of rows of shops in varying sizes, on the ground and first floor. Whereas the entire shopping mall is two floors tall, the blocks on either end of the building have additional four floors overlooking the terraces over the two storey portion below. These corner portions are punctuated with rectangular and semicircular openings and an open colonnade above. The fifth floor of the end-blocks has a characteristic roof with painted tiles over a sloping roof. Similar tiles are repeated to ensure a harmony in all the tops of the building at Hiranandani Gardens.



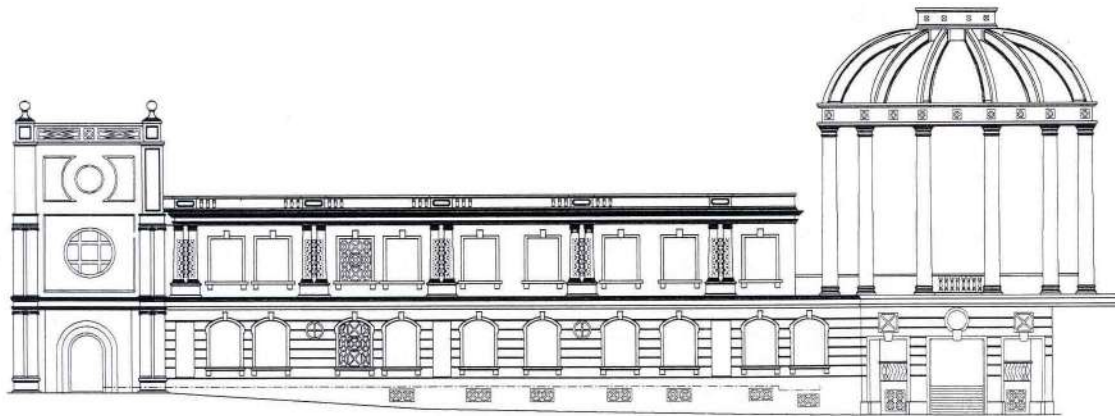
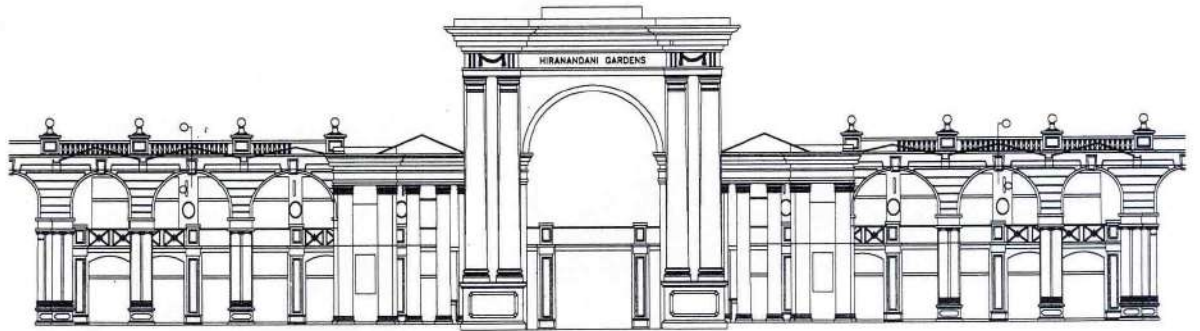
- 1 Shop
- 2 Toilet
- 3 Atrium
- 4 Courtyard
- 5 Lift
- 6 Bank
- 7 Lift lobby
- 8 Wide aisle
- 9 Cloister
- 10 Entrance
- 11 Entrance from car park area
- 12 Open to sky
- 13 Void

SITE PLAN 



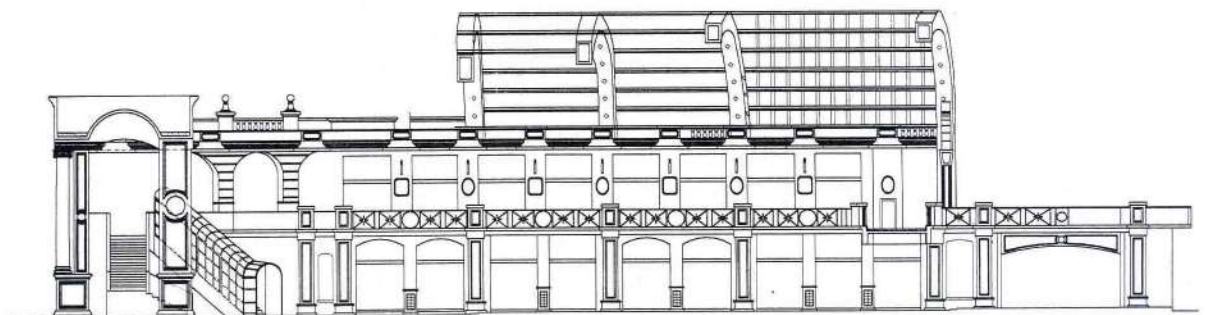
ELEVATION

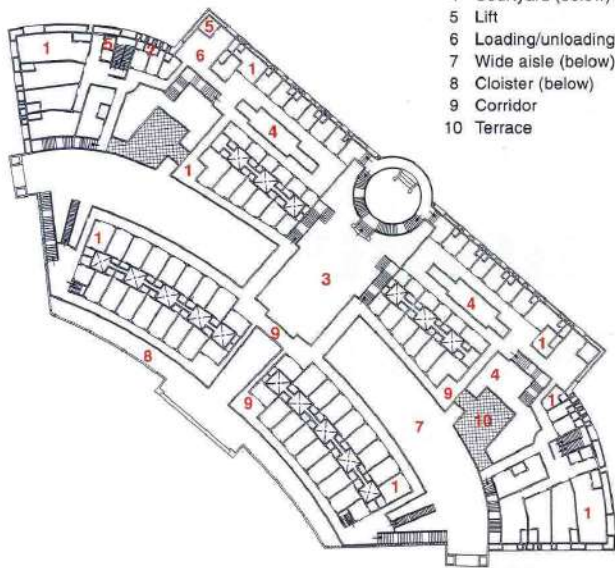
ELEVATION



ELEVATION

ELEVATION



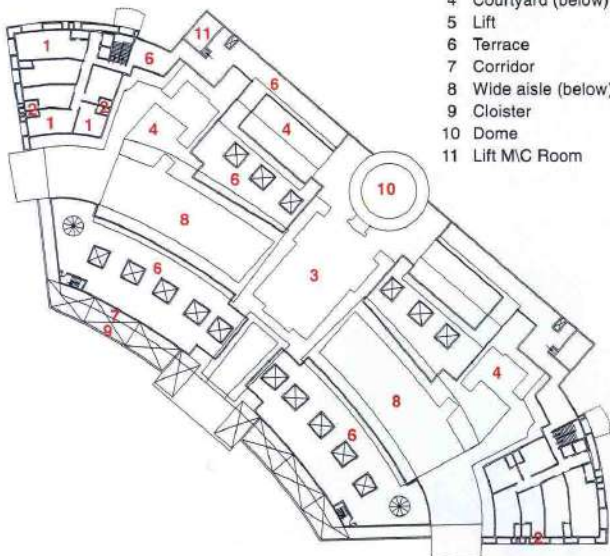


FIRST FLOOR PLAN

- 1 Shop
- 2 Toilet
- 3 Atrium (below)
- 4 Courtyard (below)
- 5 Lift
- 6 Loading/unloading
- 7 Wide aisle (below)
- 8 Cloister (below)
- 9 Corridor
- 10 Terrace



**Above** Interior view of the left wing of Galleria 1  
**Below** Interior view during daytime



SECOND TO FIFTH FLOOR PLAN

- 1 Shop
- 2 Toilet
- 3 Atrium (below)
- 4 Courtyard (below)
- 5 Lift
- 6 Terrace
- 7 Corridor
- 8 Wide aisle (below)
- 9 Cloister
- 10 Dome
- 11 Lift M/C Room



In order to avoid congestion, the passage walkway or corridors outside the shops are wide, open and well-ventilated. In fact, the corridors on the first floor of the mall are wide terraces that cover shops underneath them, thereby creating smaller shops on the upper floor. The terraced walkways are arranged in such a way that they face each other, creating an open atrium-like space between them. The terraced walkways and the atrium space are shaded under a voluminous cylindrical pergola-like space frames.

The food court has proved immensely successful in providing a low-cost alternative for the surrounding commercial and residential development and eliminated the need for hawkers in the locality. The sitting areas are covered with a pitched roof, with sturdy seats and an easy to clean marble tabletop. ☩

**Client** Galleria, Mumbai

**Design team** Hafeez Contractor, Hiten Negandhi, Surendra Hiranandanti

**Consultants** Mahimtura Consultants

**Built-up area** 1,50,5000 sq.ft.

**Cost** Rs.18 crores